

Stranded Colorwork Hat

Materials:

3 (or more) colors of yarn of approximately the same weight
totaling approx. 200 yards

16" circular needle in size to get specified gauge

Set of double pointed needles in same size

Stitch markers

Tapestry needle



In Main Color (MC), cast on multiple of 4 stitches to give you hat size at knitting gauge using circular needle

Examples, for 22 inch hat: 4 stitches/inch X 22 in= 88 stitches (multiple of 4)
 5 stitches/inch X 22 in = 110 (-2= 108, or +2=112, both multiples of 4)
 5.5 stitches/inch X 22 in= 121 (-1=120, multiple of 4)

Join (being careful not to twist) ☺

Purl 2 rounds in Color1.

Begin Corrugated Ribbing: K2 in Color1, P2 in Color2, repeat to end of round.

Work 8-10 rounds total of corrugated ribbing.

in Color1: Knit 1 round , Purl 1 round **

in Color3: Knit 1 round, Purl 1 round **

in Color1: Knit 1 round, Purl 1 round **

** adding stitches if necessary to achieve multiple of 30 or 40 for charted colorwork pattern:

88, add 2 for 90 total	use chart A
108, add 12 for 120 total	use chart B
112, add 8 for 120 total	use chart B
120, good to go-	use chart B

Begin charted colorwork, placing a stitch marker at beginning of each chart repeat to simplify placement of crown decreases.

Switch to double pointed needles when too few stitches remain to work on circular needle.

Chart A:

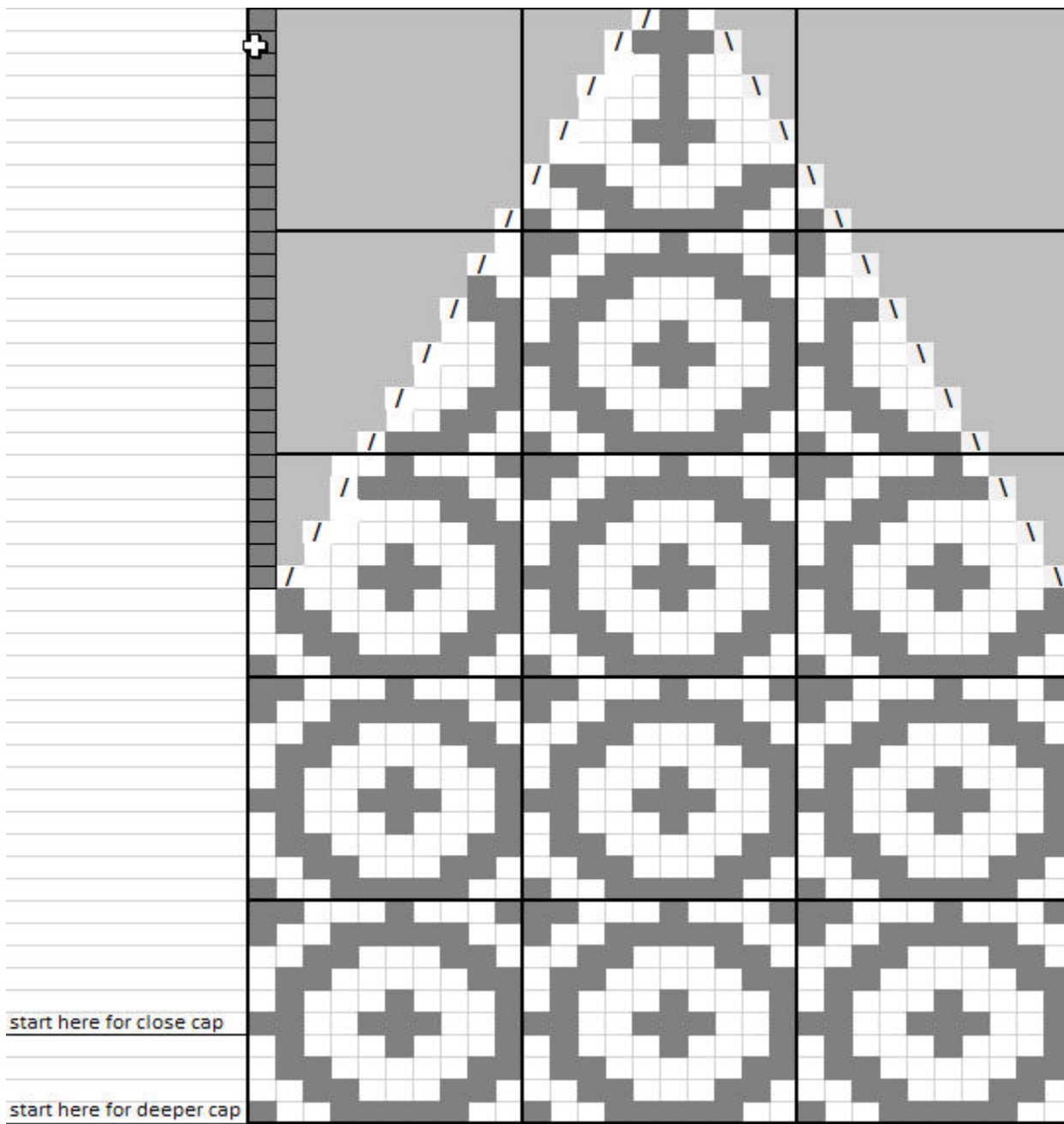
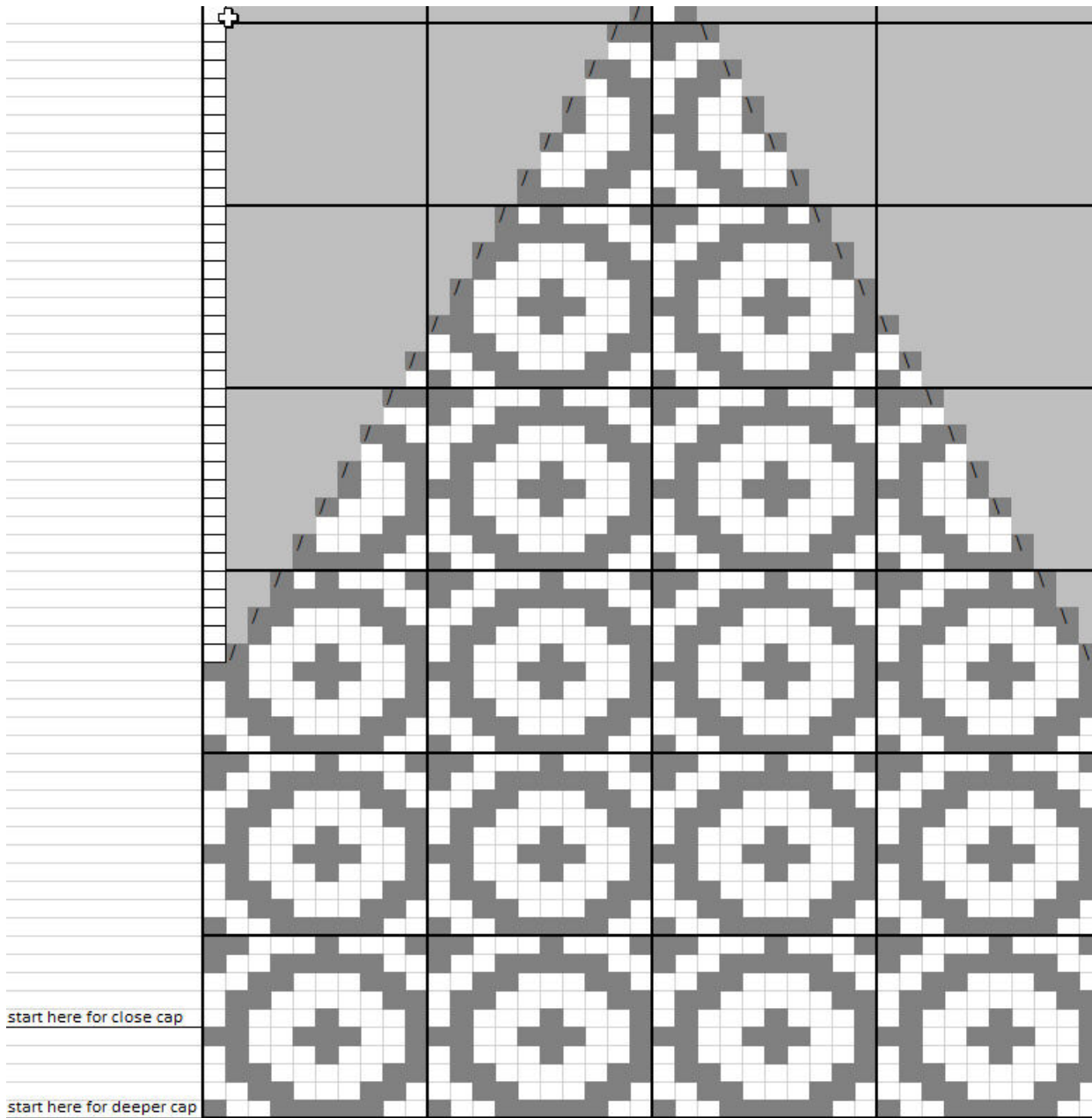


chart key	
foreground color	■
background color	□
no stitch	■
right-leaning decrease	/
left-leaning decrease	\

Chart B:



Using tapestry needle, run working yarn through remaining stitches and pull snug.

Weave in loose ends.

Hand wash in warm water without agitating & dry flat, blocking to shape and to flatten colorwork.