

# Coast to Coast Colorwork Cap

## Materials:

- 2 or 3 (or more!) colors of yarn of approximately DK-ish weight totaling approx. 200 yards
- 16" circular needle in size to get desired gauge
- Set of double pointed needles of same size
- Stitch markers, tapestry needle

**Gauge:** 5.5 - 6 stitches per inch, depending on weight of yarn and desired size.

**Size:** 18.6 - 21.8 inches depending on gauge and starting stitch count.



## Instructions:

In Main Color (MC), cast on 112, 116 or 120 stitches using circular needle (depending upon desired size/fit at brim.

Join to work in the round.

Begin Corrugated Ribbing: K2 in MC, P2 in Contrast Color (CC), repeat to end of round.

Work 10-12 rounds total of corrugated ribbing (or more if you want a deeper hat)

in MC: Knit 1 round, Purl 1 round

in CC: Knit 1 round, Purl 1 round

in MC: Knit 1 round, Purl 1 round, increasing stitches if necessary to achieve total of 120 stitches for charted colorwork pattern: if you have 112 stitches, increase 8 for 120 total; if you have 116 stitches, increase 4 for 120 total.

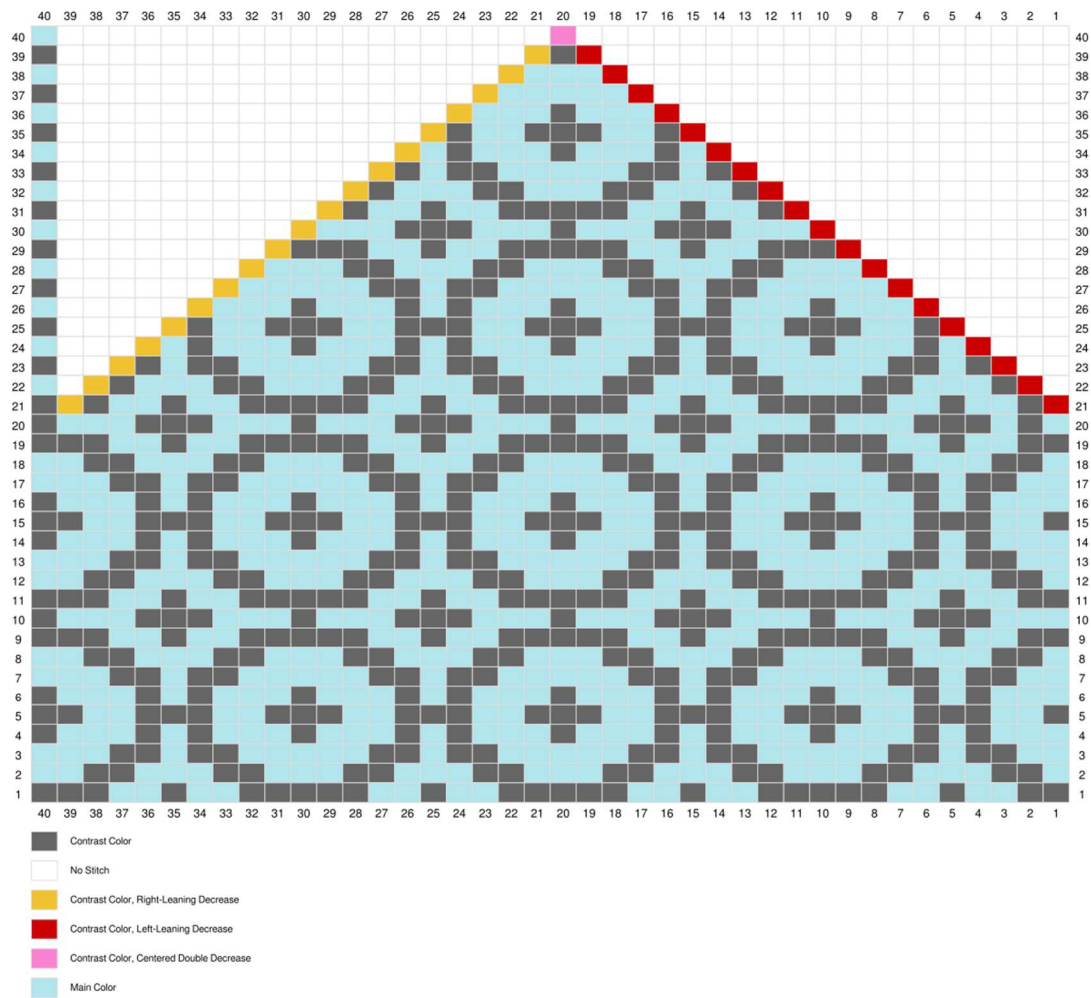
**Place stitch markers in stitch 40, stitch 80, stitch 120.**

**Work charted colorwork rows 1-20 in round with no shaping.**

**Work charted colorwork rows 21-40 in round decreasing for crown as specified in chart, moving to double pointed needles when diameter becomes too small to work on 16" circulars.**

After completing chart, 6 stitches remain. Using tapestry needle, pull working threads through remaining stitches and pull tight. Weave in all loose ends.

To finish: Soak in warm slightly soapy water, rinse, block and dry flat.



Designed with Stitch Fiddle  
www.StitchFiddle.com

